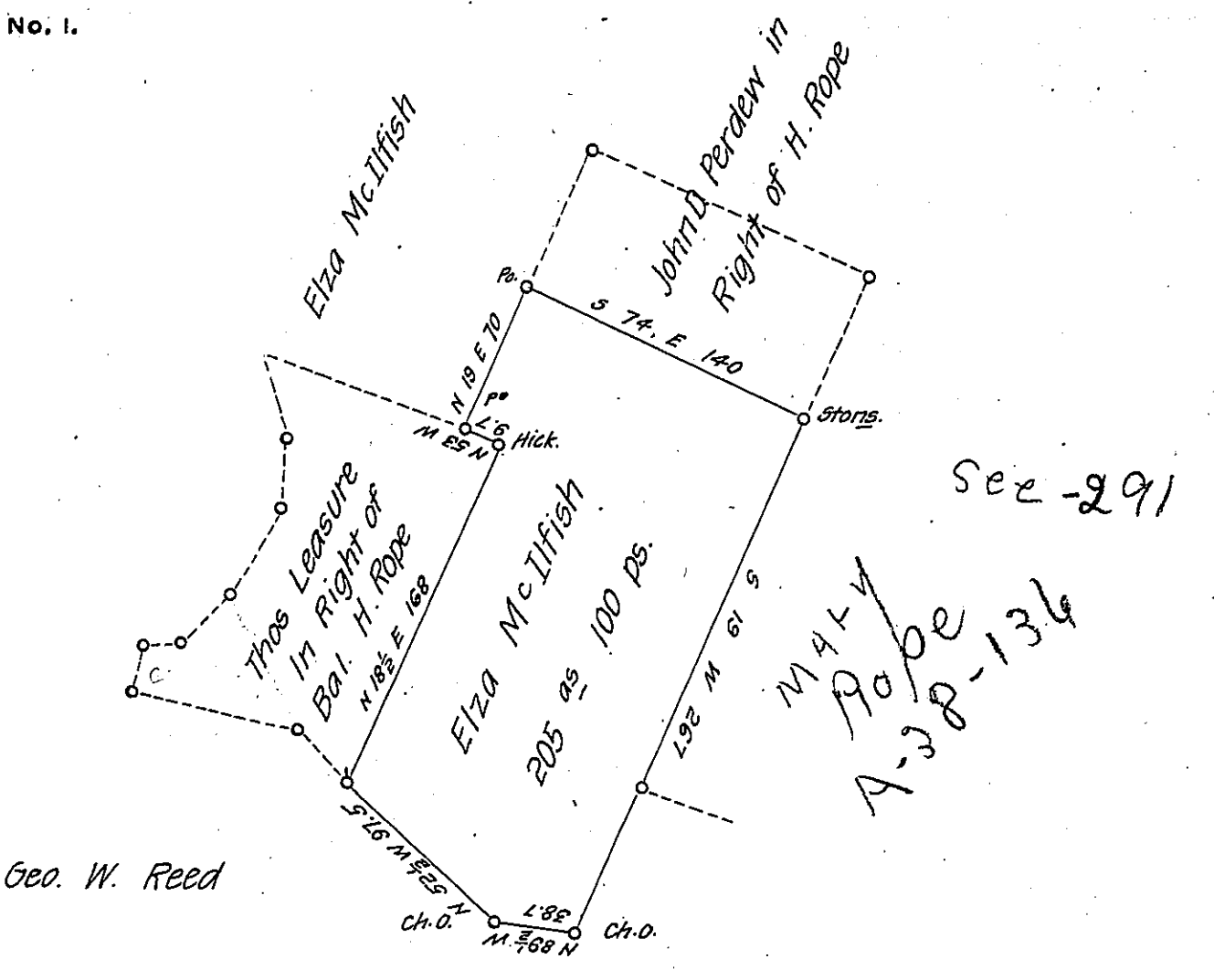


FORM No. 1.



Situate in Southampton township Bedford County Containing 205 Acres  
 100 perches and the usual allowance of six per Cent for Roads &c. Resurveyed  
 the 14<sup>th</sup> day of April 1870 for Elza McIlfish on Order of Resurvey granted by the  
 Board of Property dated 11<sup>th</sup> April 1870 on a part of a larger tract of land Sur-  
 veyed on Warrant to Hannah Rope dated 21<sup>st</sup> Feby 1794 \*

Sam<sup>l</sup>. Ketterman C.S.

To J. M. Campbell Esqr.

S. G.

\* Say 12<sup>th</sup> March 1794

IN TESTIMONY that the above is a copy of the original remaining on file in  
 the Department of Internal Affairs of Pennsylvania, made  
 conformably to an Act of Assembly approved the 16th day of  
 February, 1833, I have hereunto set my Hand and caused  
 the Seal of said Department to be affixed at Harrisburg,  
 this twenty first day of November 1906

*Loacel Brown*  
 Secretary of Internal Affairs.